

EAGAN MANUFACTURING, INC.

SINGLE & DOUBLE DOOR

INSTALLATION NOTES:

- ONE (1) INSTALLATION ANCHOR IS REQUIRED AT EACH ANCHOR LOCATION SHOWN.
- THE NUMBER OF INSTALLATION ANCHORS DEPICTED IS THE MINIMUM NUMBER OF ANCHORS TO BE USED FOR PRODUCT INSTALLATION.
- INSTALL INDIVIDUAL INSTALLATION ANCHORS WITHIN A TOLERANCE OF ±1/2 INCH OF THE DEPICTED LOCATION IN THE ANCHOR LAYOUT DETAIL (I.E., WITHOUT CONSIDERATION OF TOLERANCES). TOLERANCES ARE NOT CUMULATIVE FROM ONE INSTALLATION ANCHOR TO THE NEXT.
- SHIM AS REQUIRED AT EACH INSTALLATION ANCHOR WITH LOAD BEARING SHIM(S). MAXIMUM ALLOWABLE SHIM STACK TO BE 1/4 INCH. SHIM WHERE SPACE OF 1/16 INCH OR GREATER OCCURS. SHIM(S) SHALL BE CONSTRUCTED OF HIGH DENSITY PLASTIC OR BETTER.
- FOR INSTALLATION INTO WOOD FRAMING USE #8 PAN HEAD WOOD SCREWS OF SUFFICIENT LENGTH TO ACHIEVE 1 1/2 INCH MINIMUM EMBEDMENT INTO WOOD SUBSTRATE.
- FOR INSTALLATION THROUGH STEEL STUD USE #8 SELF-TAPPING SCREW OR EQUIVALENT OF SUFFICIENT LENGTH TO ACHIEVE 3 THREADS MINIMUM PENETRATION THROUGH STEEL FRAME SUBSTRATE.
- MINIMUM EMBEDMENT AND EDGE DISTANCE EXCLUDE WALL FINISHES, INCLUDING BUT NOT LIMITED TO FOAM AND SIDING.
- INSTALLATION ANCHORS AND ASSOCIATED HARDWARE MUST BE MADE OF CORROSION RESISTANT MATERIAL OR HAVE A CORROSION RESISTANT COATING.
- INSTALLATION ANCHORS SHALL BE INSTALLED IN ACCORDANCE WITH ANCHOR MANUFACTURER'S INSTALLATION INSTRUCTIONS, AND ANCHORS SHALL NOT BE USED IN SUBSTRATES WITH STRENGTHS LESS THAN THE MINIMUM STRENGTH SPECIFIED BY THE ANCHOR MANUFACTURER.
- INSTALLATION ANCHOR CAPACITIES FOR PRODUCTS HEREIN ARE BASED ON SUBSTRATE MATERIALS WITH THE FOLLOWING PROPERTIES:
 - WOOD - MINIMUM SPECIFIC GRAVITY OF 0.55.
 - STEEL - MINIMUM YIELD STRENGTH OF 33 KSI. MINIMUM WALL THICKNESS OF 33 MILS.

GENERAL NOTES:

- THE PRODUCT SHOWN HEREIN IS DESIGNED AND MANUFACTURED TO COMPLY WITH THE 6TH EDITION (2017) FLORIDA BUILDING CODE (FBC), EXCLUDING HVHZ AND HAS BEEN EVALUATED ACCORDING TO THE FOLLOWING:
 - ASTM E 330-02
- ADEQUACY OF THE EXISTING STRUCTURAL STEEL STUD AND 2X FRAMING AS A MAIN WIND FORCE RESISTING SYSTEM CAPABLE OF WITHSTANDING AND TRANSFERRING APPLIED PRODUCT LOADS TO THE FOUNDATION IS THE RESPONSIBILITY OF THE ENGINEER OR ARCHITECT OF RECORD FOR THE PROJECT OF INSTALLATION.
- 1X AND 2X BUCKS (WHEN USED) SHALL BE DESIGNED AND ANCHORED TO PROPERLY TRANSFER ALL LOADS TO THE STRUCTURE. BUCK DESIGN AND INSTALLATION IS THE RESPONSIBILITY OF THE ENGINEER OR ARCHITECT OF RECORD FOR THE PROJECT OF INSTALLATION.
- THE INSTALLATION DETAILS DESCRIBED HEREIN ARE GENERIC AND MAY NOT REFLECT ACTUAL CONDITIONS FOR A SPECIFIC SITE. IF SITE CONDITIONS CAUSE INSTALLATION TO DEVIATE FROM THE REQUIREMENTS DETAILED HEREIN, A LICENSED ENGINEER OR ARCHITECT SHALL PREPARE SITE SPECIFIC DOCUMENTS FOR USE WITH THIS DOCUMENT.
- APPROVED IMPACT PROTECTIVE SYSTEM **IS REQUIRED** ON THIS PRODUCT IN AREAS REQUIRING IMPACT RESISTANCE.
- DOOR FRAME MATERIAL: ALUMINUM 6063-T6
- DOOR PANEL MATERIAL: ALUMINUM 6063-T6, FIBERGLASS OR STEEL

TABLE OF CONTENTS		
SHEET	REVISION	SHEET DESCRIPTION
1	B	INSTALLATION & GENERAL NOTES
2	B	ELEVATIONS & ANCHOR LAYOUTS
3	B	VERTICAL & HORIZONTAL SECTIONS

DESIGN PRESSURE RATING		
DESIGN PRESSURE - ALL SIZES		MISSILE IMPACT RATING
+20.0 / -20.0 PSF	SINGLE DOOR	NON-IMPACT
+16.66 / -13.33 PSF	DOUBLE DOOR	

NOTE: THESE DOORS ARE NOT RATED FOR WATER INFILTRATION. UNIT SHALL BE INSTALLED AT LOCATION PROTECTED BY OVERHANG SUCH THAT OVERHANG(OH) RATIO = OH LENGTH/OH HEIGHT IS EQUAL TO, OR GREATER THAN, 1.0 WHERE WATER INFILTRATION RATING IS REQUIRED.



620 EAGAN ROAD
BLACK ROCK, AR 72415
PH: (800) 835-3002 FX: (870) 878-6280

TITLE:

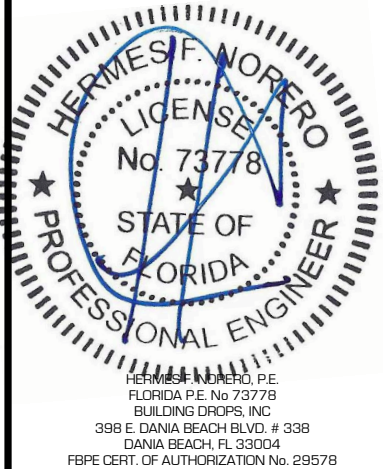
SINGLE & DOUBLE DOOR
INSTALLATION &
GENERAL NOTES

PREPARED BY:

BUILDING DROPS, INC.
398 E. DANIA BEACH BLVD., STE. 338
DANIA BEACH, FL 33004
PH: (954) 399-8478
FAX: (954) 744-4738
WEB: www.buildingdrops.com

REMARKS	BY	DATE
5TH EDITION FBC REVISION	LS	7.31.15
6TH FBC CODE CHANGE	CL	9.24.17

THIS DOCUMENT IS THE PROPERTY OF BUILDING DROPS, INC. AND SHALL NOT BE REPRODUCED IN WHOLE OR PART WITHOUT WRITTEN CONSENT OF BUILDING DROPS, INC. ALTERATIONS, ADDITIONS, HIGHLIGHTING, OR OTHER MARKINGS TO THIS DOCUMENT ARE NOT PERMITTED AND INVALIDATE OUR CERTIFICATION.



FL #:
FL12820

DATE: **09.24.17**

DWG. BY: **CL** CHK. BY: **HFN**

SCALE: **NTS**

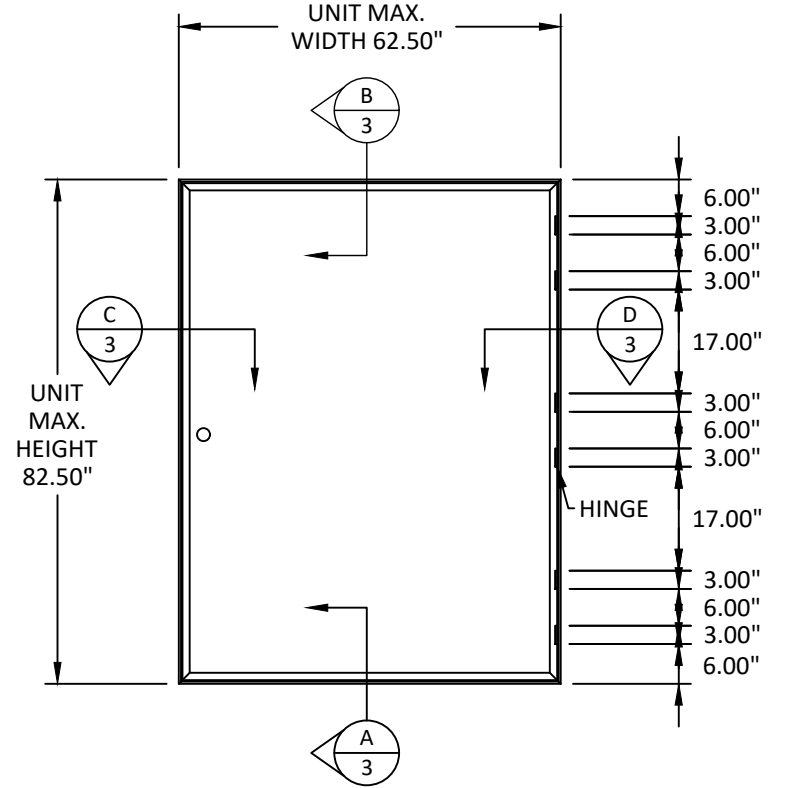
DWG. #: **EAM008**

SHEET:

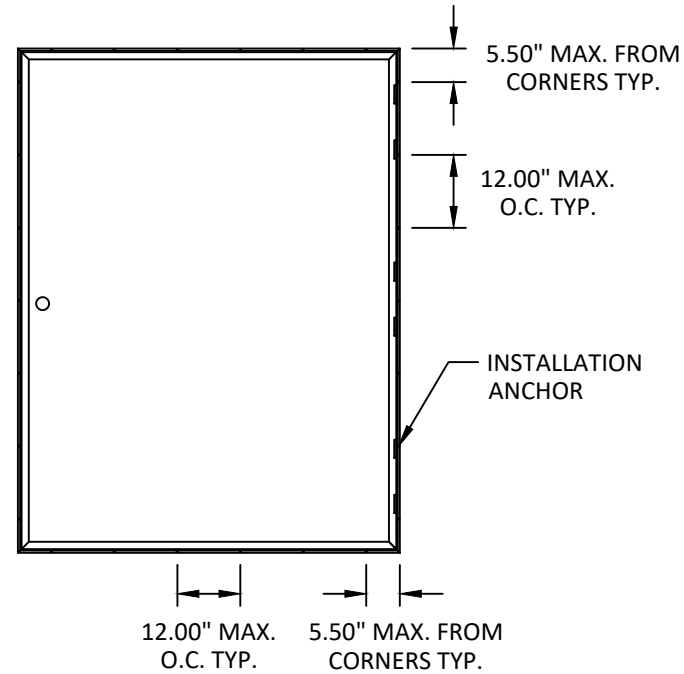
1

OF 4

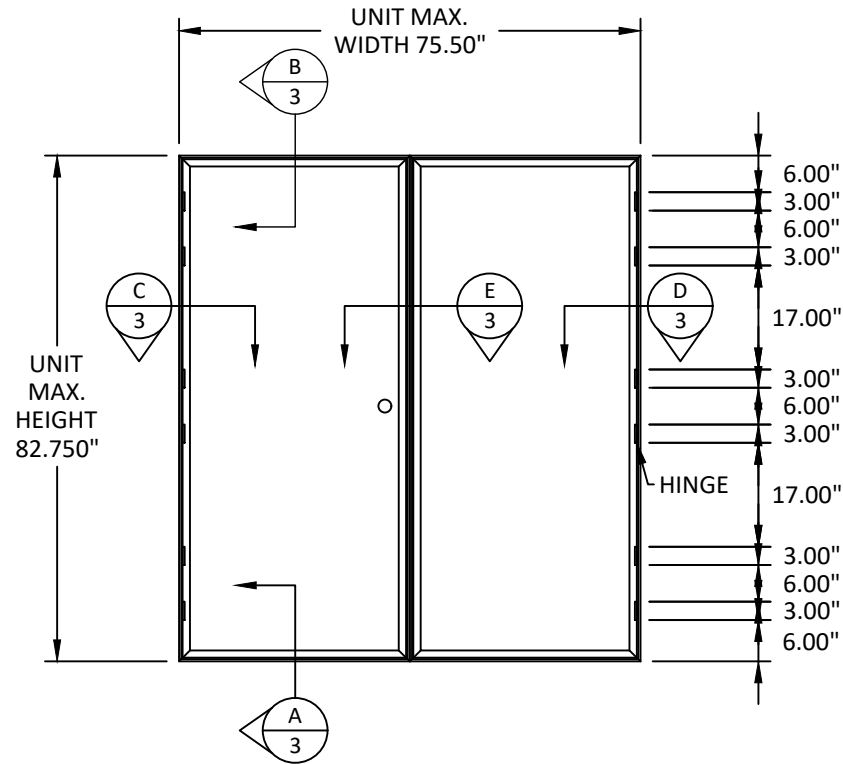
s:\projects\egan mfg\cc-17-0682 fbc 2016 (version 6) code change\dwgs\112820\eam006 single and double door.dwg 9/24/2017 1:09 PM



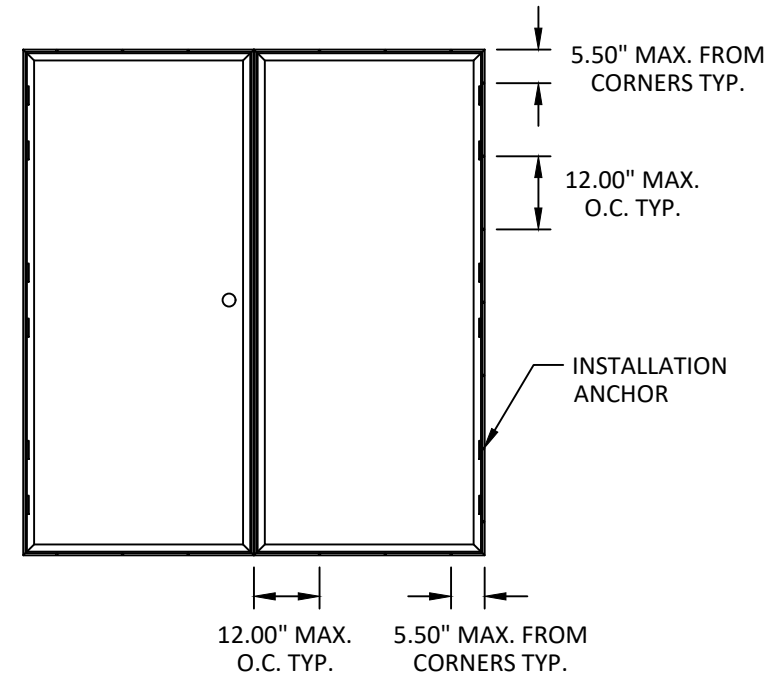
ELEVATION
EXTERIOR VIEW



ANCHOR LAYOUT



ELEVATION
EXTERIOR VIEW



ANCHOR LAYOUT



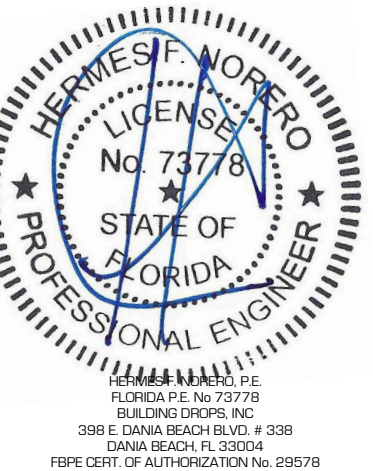
620 EAGAN ROAD
BLACK ROCK, AR 72415
PH: (800) 835-3002 FX: (870) 878-6280

TITLE: SINGLE & DOUBLE DOOR
ELEVATION &
ANCHOR LAYOUT

PREPARED BY: BUILDING DROPS, INC.
398 E. DANIA BEACH BLVD., STE. 338
DANIA BEACH, FL 33004
PH: (954) 399-8478
FAX: (954) 744-4738
WEB: www.buildingdrops.com

REMARKS	BY	DATE
5TH EDITION FBC REVISION	LS	7.31.15
6TH FBC CODE CHANGE	CL	9.24.17

THIS DOCUMENT IS THE PROPERTY OF BUILDING DROPS, INC. AND SHALL NOT BE REPRODUCED IN WHOLE OR PART WITHOUT WRITTEN CONSENT OF BUILDING DROPS, INC. ALTERATIONS, ADDITIONS, HIGHLIGHTING, OR OTHER MARKINGS TO THIS DOCUMENT ARE NOT PERMITTED AND INVALIDATE OUR CERTIFICATION.



FL #: **FL12820**

DATE: **09.24.17**

DWG. BY: **CL** CHK. BY: **HFN**

SCALE: **NTS**

DWG. #: **EAM008**

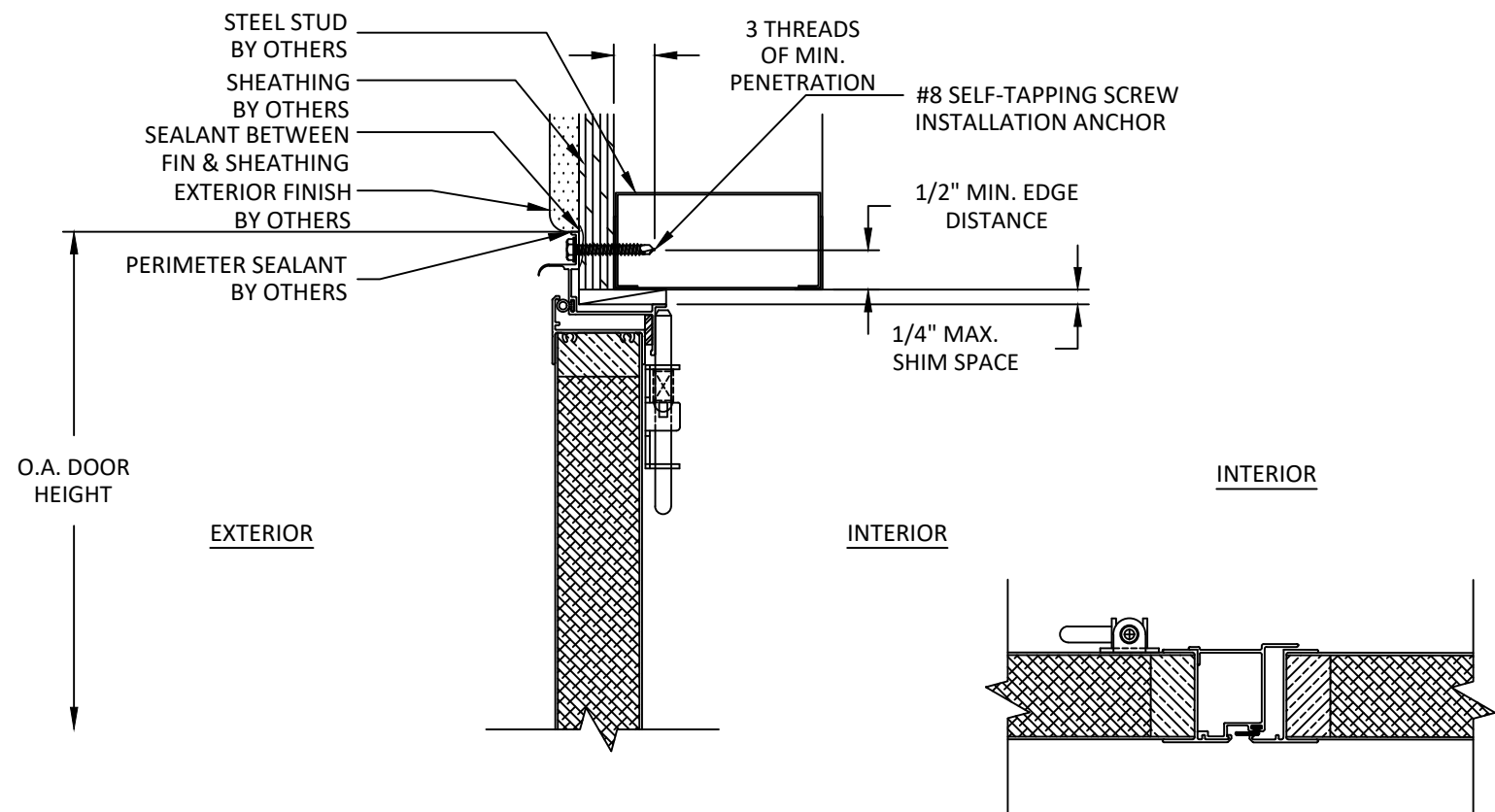
SHEET:

9/24/2017 1:09 PM

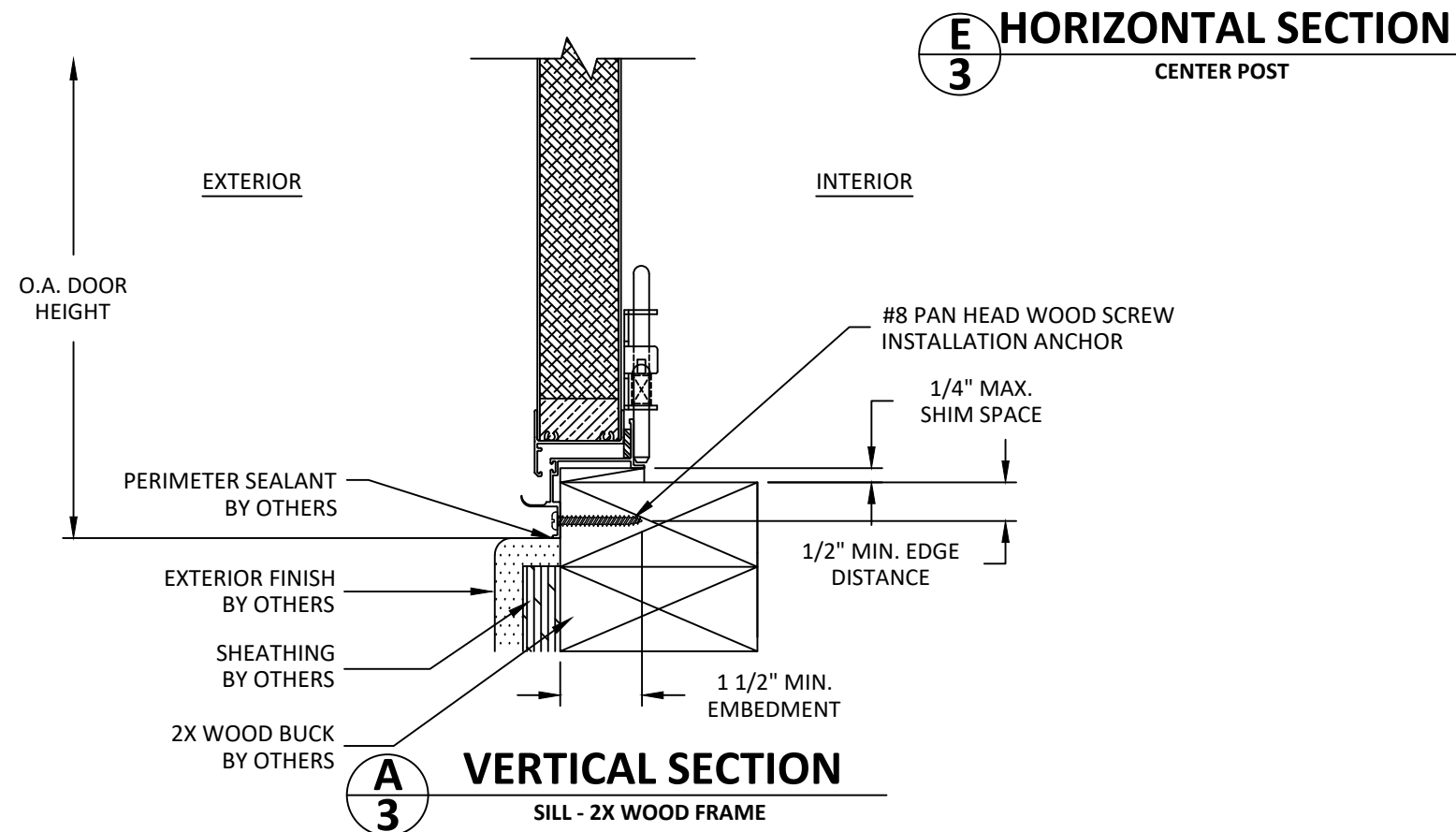
9/24/2017 1:09 PM

s:\projects\eam006\eam006.dwg (version 6) code change\dwg\112820\eam006 single and double door.dwg

s:\projects\eam006\eam006.dwg (version 6) code change\dwg\112820\eam006 single and double door.dwg

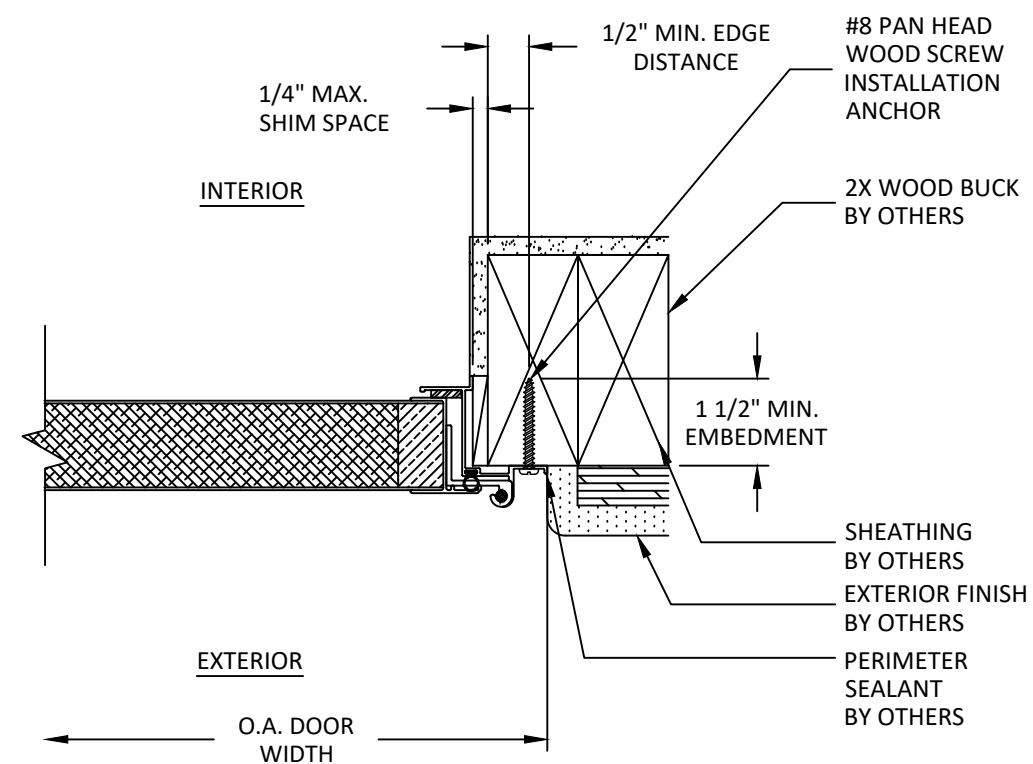


B
3 VERTICAL SECTION
HEAD - STEEL STUD

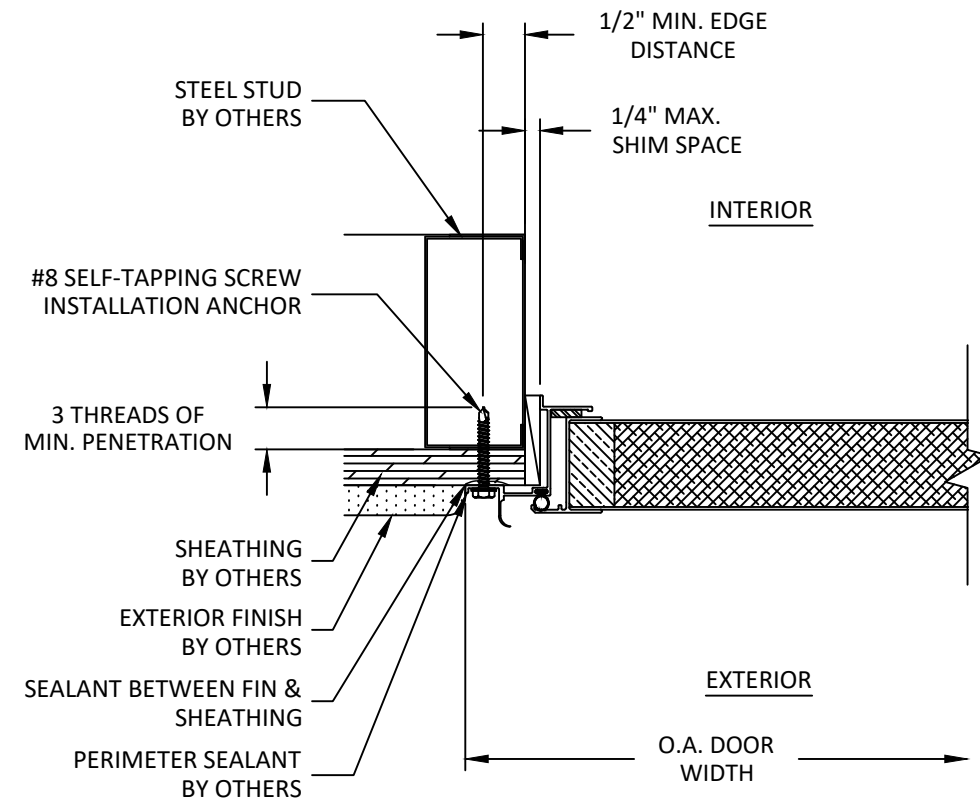


A
3 VERTICAL SECTION
SILL - 2X WOOD FRAME

E
3 HORIZONTAL SECTION
CENTER POST



D
3 HORIZONTAL SECTION
JAMB HINGE SIDE - 2X WOOD FRAME



C
3 HORIZONTAL SECTION
JAMB LOCK SIDE - STEEL STUD



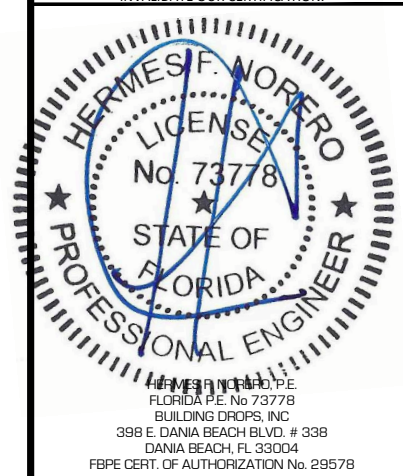
620 EAGAN ROAD
BLACK ROCK, AR 72415
PH: (800) 835-3002 FX: (870) 878-6280

TITLE: SINGLE & DOUBLE DOOR VERTICAL SECTIONS

PREPARED BY: BUILDING DROPS, INC.
398 E. DANIA BEACH BLVD., STE. 338
DANIA BEACH, FL 33004
PH: (954) 399-8478
FAX: (954) 744-4738
WEB: www.buildingdrops.com

REMARKS	BY	DATE
5TH EDITION FBC REVISION	LS	7.31.15
6TH FBC CODE CHANGE	CL	9.24.17

THIS DOCUMENT IS THE PROPERTY OF BUILDING DROPS, INC. AND SHALL NOT BE REPRODUCED IN WHOLE OR PART WITHOUT WRITTEN CONSENT OF BUILDING DROPS, INC. ALTERATIONS, ADDITIONS, HIGHLIGHTING, OR OTHER MARKINGS TO THIS DOCUMENT ARE NOT PERMITTED AND INVALIDATE OUR CERTIFICATION.



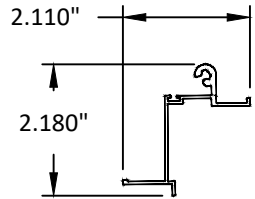
FL #:	FL12820
DATE:	09.24.17
DWG. BY:	CL
CHK. BY:	HFN
SCALE:	NTS
DWG. #:	EAM008
SHEET:	3

s:\projects\eam006 mfg\cc-17-0682 fbc 2016 (version 6) code change\dwgs\112820\eam006 single and double door.dwg 9/24/2017 1:10 PM

BILL OF MATERIALS					
ITEM	SINGLE DOOR QUANTITY	DOUBLE DOOR QUANTITY	DESCRIPTION	PART #	VENDOR/MANUFACTURER
1	1	1	Outside Frame Header	13645 6063 T-6 Tempered	Claridge
2	1	1	Outside Frame Sill	13645 6063 T-6 Tempered	Claridge
3			Handicap Threshold (Optional)	13741 6063 T-6 Tempered	Claridge
4	1	1	Outside Frame Lock Side Jam	13645 6063 T-6 Tempered	Claridge
5	1	2	Outside Frame Hinge Side Jam	13636 6063 T-6 Tempered	Claridge
6	6	12	Outside Post Hinge Tabs	13637 6063 T-6 Tempered	Claridge
7	12	24	Hinge Bushings	E-CS	M&M Plastics
8	1	2	Hinge Rod 1/8" diameter	304/304L CFA Round Bar	Ryerson
9	1	1	Striker Plate	78-9723-49810	Fastec
10	2	2	Striker Plate Screws	#6 x 1/4 PH Pan Type A	Town & Country
11	1	1	Outer Bulbseal Vinyl	VB-250	Waltec
12	1	1	Polyeather Foam Seal	P8525E x .563	Pres-on
13	1	2	Core Frame Header	20581-1 6063 T-6 Tempered	Loxcreen
14	1	2	Core Frame Sill	20581-1 6063 T-6 Tempered	Loxcreen
15	2	4	Core Jam	20566-1 6063 T-6 Tempered	Loxcreen
16	1	2	PVC Internal Frame 1-3/8" x 3/4"	E-1038-1200-003	Goosen
17	1	1	PVC Internal Lock Block 1-3/8" x 3/4"	E-1038-1200-003	Goosen
18	1	2	Expanded Polystyrene Core (1 lb. Density)	Type-1-EPS	Drew Foam
19	2	4	Daubond Hot-Melt Polyurethane	U8506-01	Daubert Chemical
20	2	4	.045 6 oz. Pebble embossed FRP Panel	FTX06TXK590007875	Glasteel
21	14	22	PVC Frame Brads (Spotnails 16 ga. Galvanized)	SPO 16224	Southern Fasteners
22	8	16	#6 x 3/4 Square pan FT STS Type A Corner Screw	TSA-PSQ-#6x0.750zc	Town & Country
23	6	8	#6 x 3/4 PH Truss Type A (Corner Frame Screw)	MS-Truss-#6-32x0.750zc	Town & Country
24	2	2	#8-15 x 3/4"	TSA-FP-#8x0.750zc	Town & Country
25	1	1	Square Corner Entry Latch	SCMOENTDC38	Better Homes
26	1	1	Tulip Entry Lockset	12526DC	Better Homes
27	---	1	Center Post	13726 6063 T-6 Tempered	Claridge
28	---	1	Center Post Flat Seal	0100-E	Waltec
29	---	2	Loop Style Locking Barrel Bolt	BBLOOPLLZ	Apple Fasteners

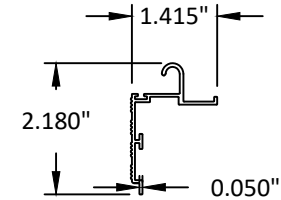
1 2 4

OUTSIDE FRAME HEADER, SILL & LOCK SIDE JAMB
6063 T-6
TYPICAL WALL THICKNESS: .050"



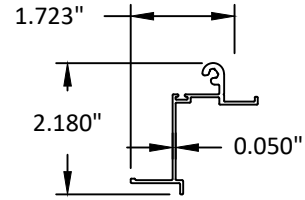
3

HANDICAP THRESHOLD (OPTIONAL)
6063 T-6
TYPICAL WALL THICKNESS: .050"



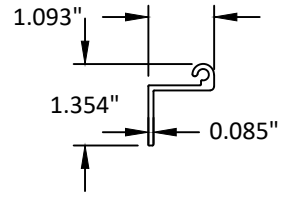
5

OUTSIDE FRAME HINGE SIDE JAMB
6063 T-6
TYPICAL WALL THICKNESS: .050"



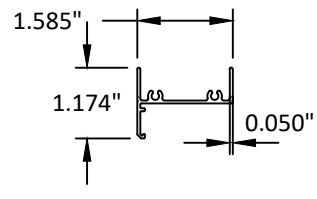
6

OUTSIDE POST HINGE TABS
6063 T-6
TYPICAL WALL THICKNESS: .050"



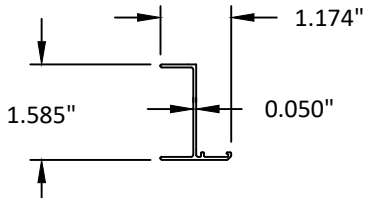
13 14

INSIDE FRAME (CORE) HEADER & SILL
6063 T-6
TYPICAL WALL THICKNESS: .050"



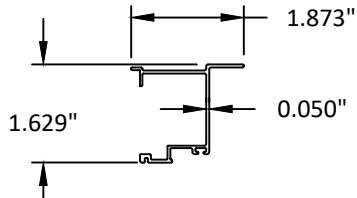
15

CORE JAMB
6063 T-6
TYPICAL WALL THICKNESS: .050"



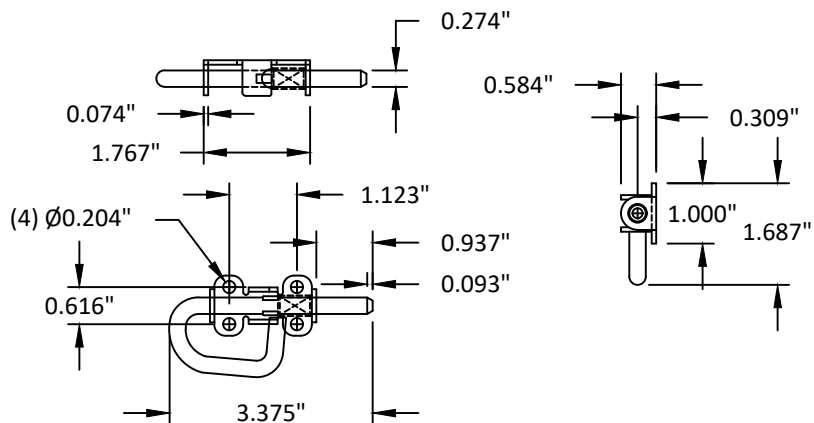
27

CENTER POST
6063 T-6
TYPICAL WALL THICKNESS: .050"



29

LOOP STYLE BARREL BOLT
ZINC PLATED
TYPICAL WALL THICKNESS: .274"

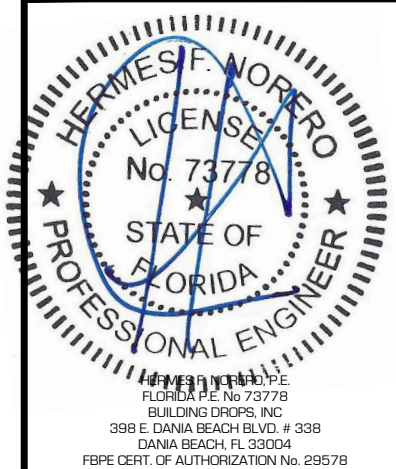


620 EAGAN ROAD
BLACK ROCK, AR 72415
PH: (800) 835-3002 FX: (870) 878-6280

SINGLE & DOUBLE DOOR COMPONENTS & BILL OF MATERIALS
PREPARED BY: BUILDING DROPS, INC.
398 E. DANIA BEACH BLVD., STE. 338
DANIA BEACH, FL 33004
PH: (954) 399-8478
FAX: (954) 744-4738
WEB: www.buildingdrops.com

REMARKS	BY	DATE
5TH EDITION FBC REVISION	LS	7.31.15
6TH FBC CODE CHANGE	CL	9.24.17

THIS DOCUMENT IS THE PROPERTY OF BUILDING DROPS, INC. AND SHALL NOT BE REPRODUCED IN WHOLE OR PART WITHOUT WRITTEN CONSENT OF BUILDING DROPS, INC. ALTERATIONS, ADDITIONS, HIGHLIGHTING, OR OTHER MARKINGS TO THIS DOCUMENT ARE NOT PERMITTED AND INVALIDATE OUR CERTIFICATION.



FL #: FL12820
DATE: 09.24.17
DWG. BY: CL
CHK. BY: HFN
SCALE: NTS
DWG. #: EAM008
SHEET: 4