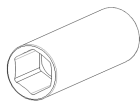


Installation Guide For Bi Fold Doors

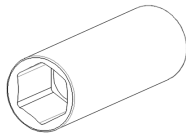
TABLE OF CONTENTS

Tools Needed.....	1
Framing	2
Hanging Door	3
Using Template and Hanging Brackets.....	4
Installing Rod	5
Installing Chain Drive.....	6
Installing Cable and Spring Stretch.....	7
Tighten Springs and Set Rod	8
Install Side Rails and Chain Keeper	9
Install Top Cover	10
Install Kicker and Latch	11
Parts	12

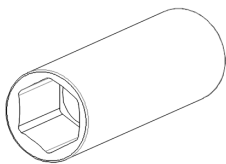
TOOLS NEEDED



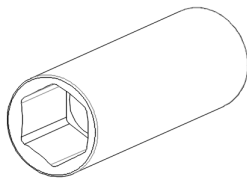
3/8" Socket



7/16" Socket



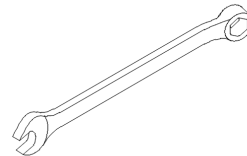
1/2" Socket



9/16" Socket



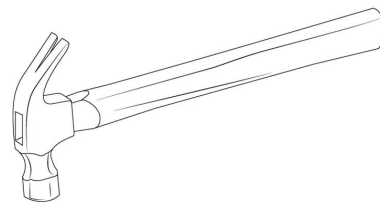
6" Socket Extension



3/8" Open End Wrench



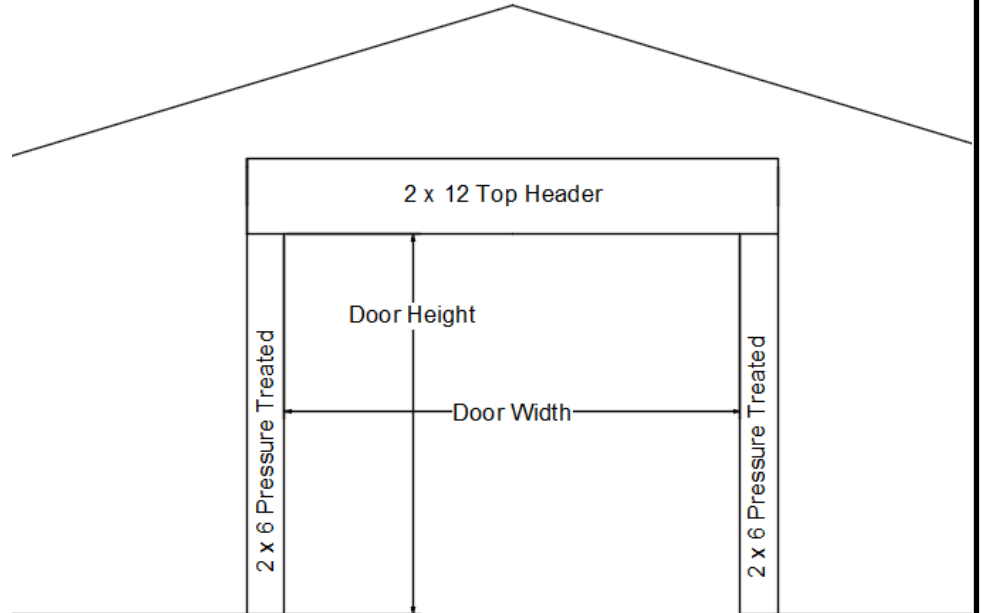
5/32" Allen wrench



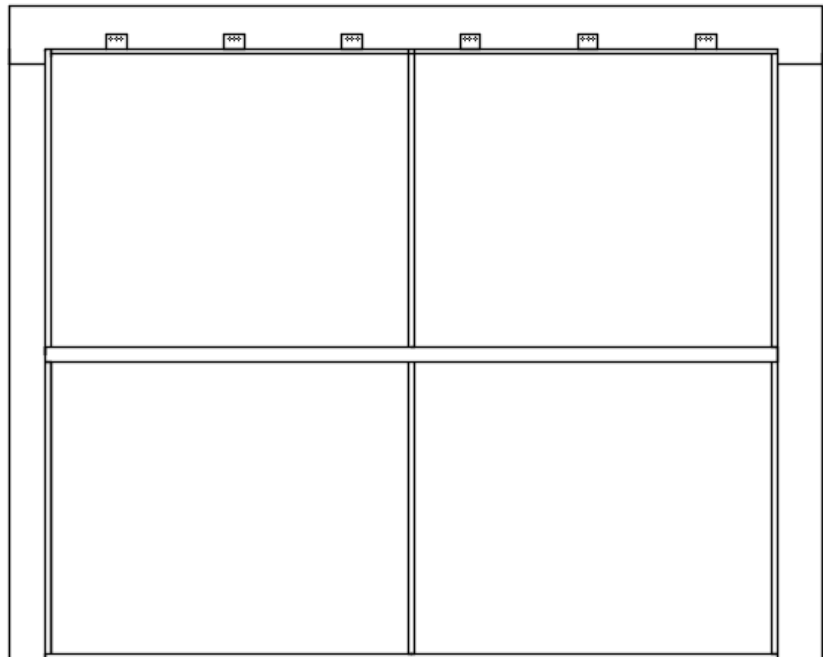
Hammer

STEP 1

Picture frame the sides of the opening with pressure treated 2" x 6". On The top use a 2" x 12" for the header. The Framing width and height is the same as the door ordered. A 12 x 10 Bi Fold will have an opening 12' wide and 10' tall. All doors are made to extend past the framed hole. 4" on the width and 3" on the top.

**STEP 2**

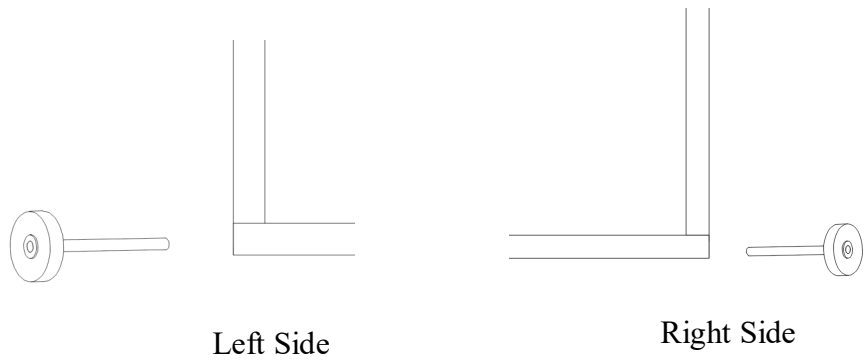
Center door in hole. Make sure that there is at least 2" over overhang of the door on each side of the door. The door should overhang at least 3" on the Top



HANGING DOOR

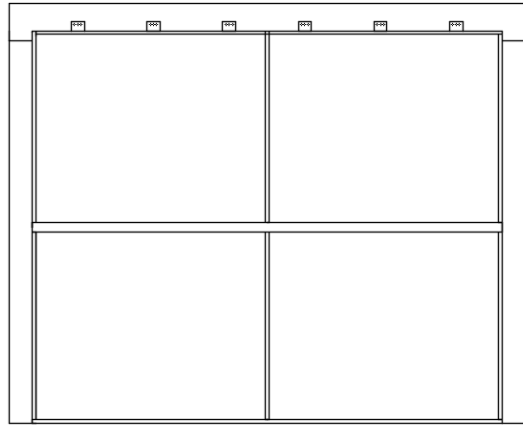
STEP 3

Before drilling and installing lags into hinge tabs, put Axel and rollers on both sides of the door. This insures the door is the correct height before installing the lags



STEP 4

Support door by pressing in the middle of the door. Make sure the door is flat against the framing. Using the supplied 9/32" Drill bit predrill the holes in the hinge tabs at the top of the door. Install one 3/8" x 3 lag with washer on each side of the door and verify that it is level and tight against the wall before installing the remaining lags in the hinge tabs.



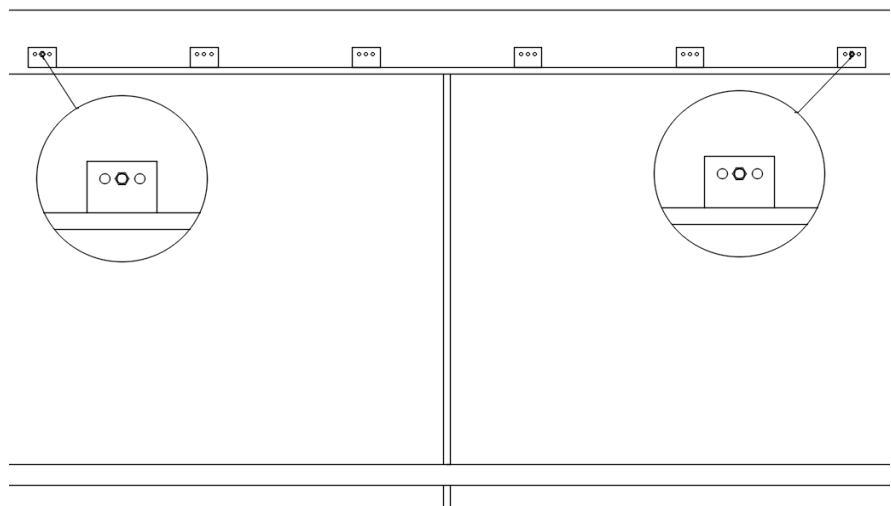
STEP 5

Once the two outside lags are in and the door is secure install the remaining lags in all the hinge tabs.

NOTE: ALWAYS PRE DRILL ALL HOLES IN THE HINGE TAB.

Use 9/32 Drill Bit to pre drill hinge tabs holes.

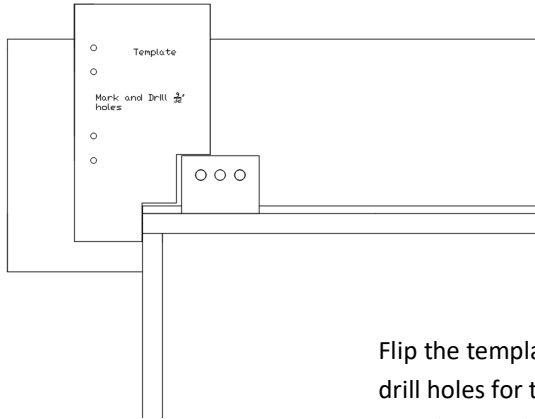
Use 3/8" x 3" lags and washers in each hole (require 9/16 socket)



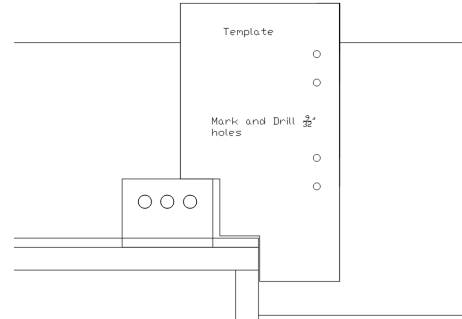
USING TEMPLATE AND MOUNTING BRACKETS

STEP 6

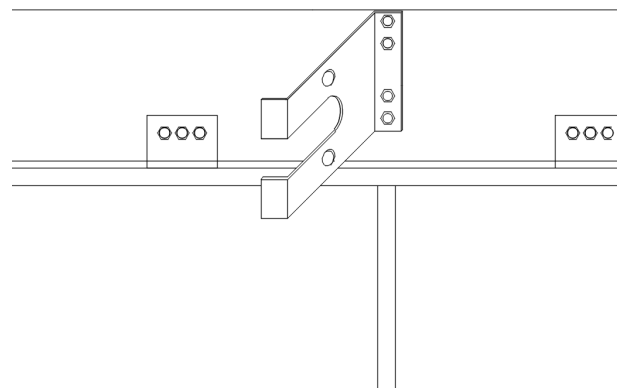
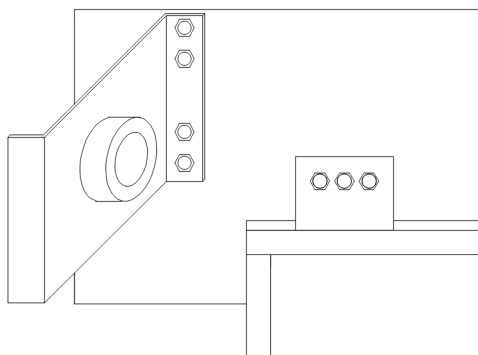
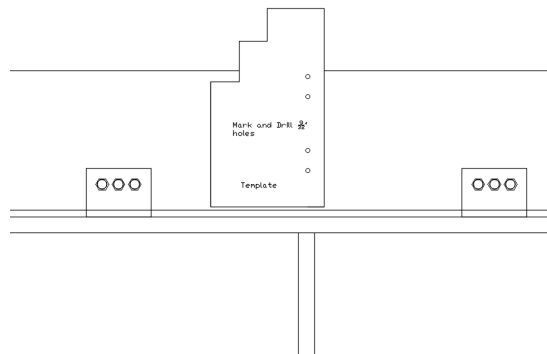
Use The Template to mark and drill holes with the supplied 9/32" bit. Start on the left side of the door. Lay the template as shown below.



Flip the template over to mark and drill holes for the right side of the door. Lay the template as shown below.



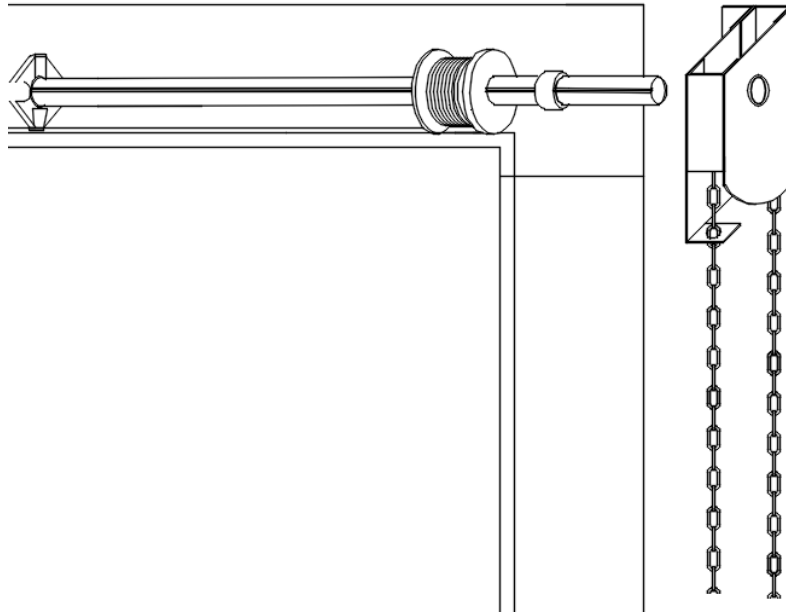
Flip the template upside down and mark and drill holes for the center of the door. Lay the template as shown below.



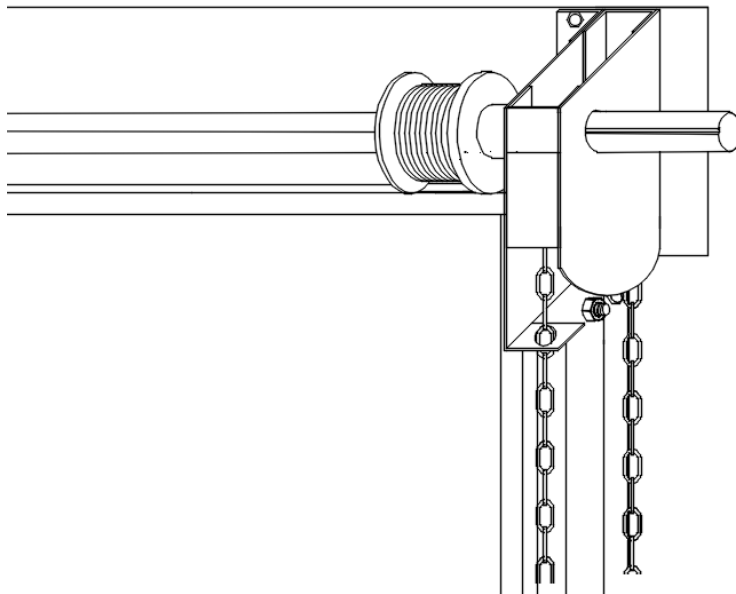
STEP 7

Mount the end rod support to the far left side. Install the rod support bushing first. Use the 3/8" x 3" lag screws and washers into the pre drilled holes. Next mount the center rod support using the 3/8" x 3" lags into the pre drilled holes

NOTICE - New Layout of Chain Drive Package



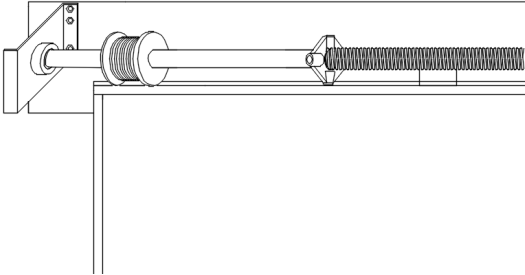
Collars are no longer needed with the new chain drive package. The nylon bushing that is included is placed between the drive and the cable drum. This replaces the collars.



INSTALLING ROD

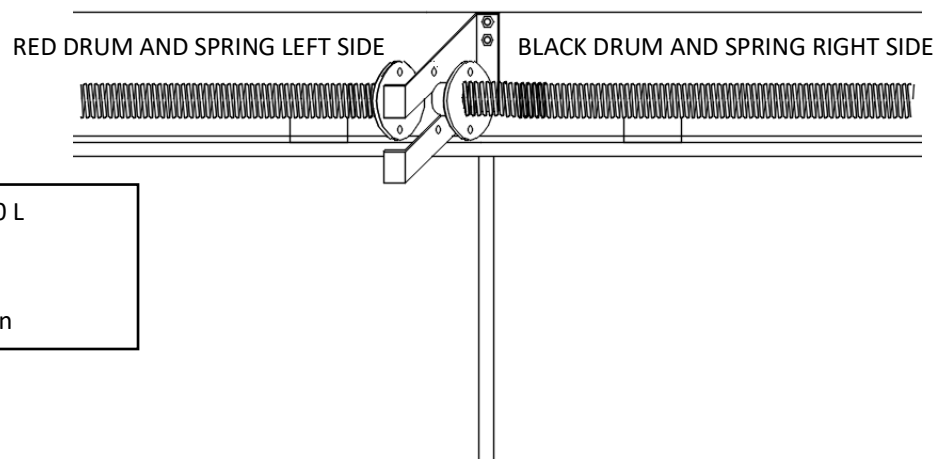
STEP 8

Separate springs until center bushing can be seen. Set the rod so the RED drum and spring are on the left and the BLACK drum and spring are on the right.

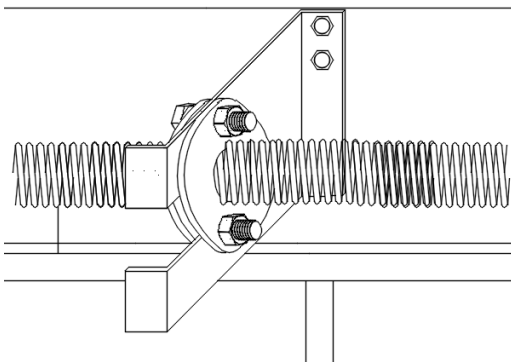


Slide the Rod into the bushing on the rod bracket. Lift the rod and slide the center rod bushing into the center rod bracket..

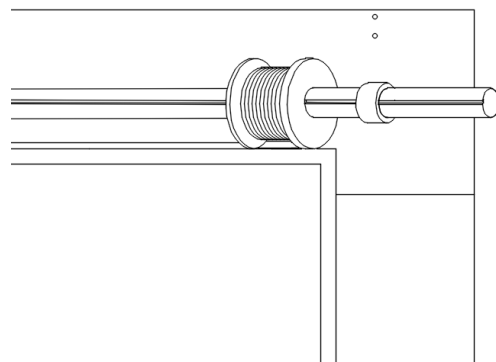
Make sure rod sticks thru bushing at least 1/2"



Right Spring (Black) markings 218-2-40 L
Left Spring (Red) markings 218-2-40 R
L & R markings do not indicate location



Place bolts and nuts into center bracket and spring assembly. Tighten bolts to secure springs.

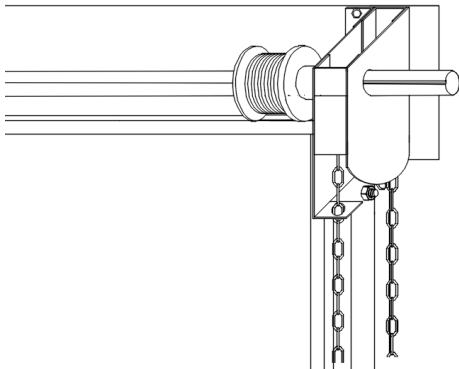
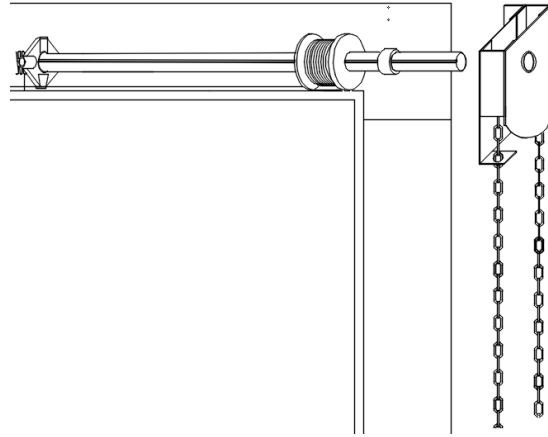


Slide black cable drum on shaft. Next, slide on the Nylon bushing.

INSTALLIG CHAIN DRIVE

STEP 9

Install chain drive on the Rod.
The rod has a keyway and the drive has a key stock build into the drive. Rotate the drive to align the key stock *with the* keyway in the rod. Slide the chain drive onto the rod and align mounting plate with the predrilled holes. Use the 3/8" X 3" lags with washers to secure chain drive.

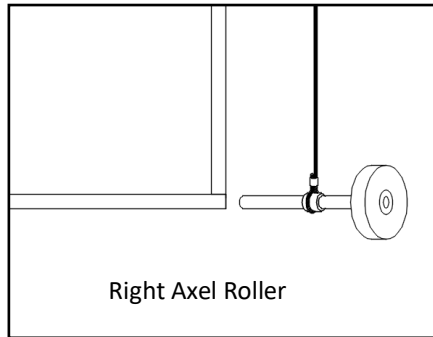
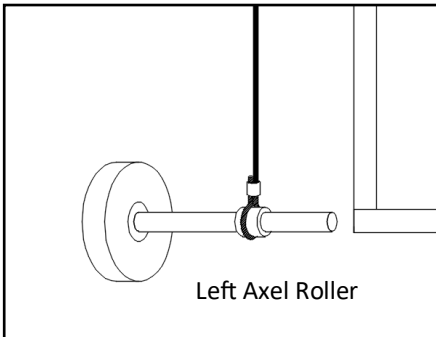


Slide nylon bushing against the chain drive. Then slide the cable drum next to the bushing. **DO NOT TIGHTEN CABLE DRUM UNTIL SPRING HAS BEEN TENSIONED.**

INSTALLING CABLE AND SPRING STRETCH

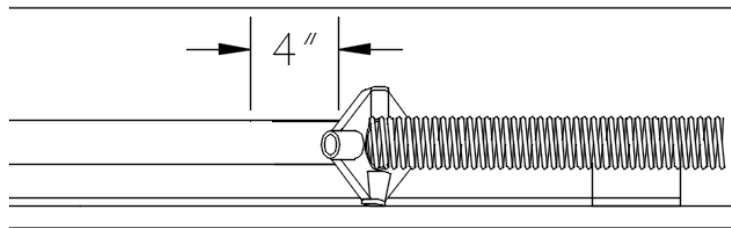
STEP 10

Unwind cable from drum and drop to the ground. Remove the axel and roller from the bottom of the door. Slide the cable bushing onto the axel and reinstall into the bottom of the door. Do the same for both the left and the right axel roller.



STEP 11

Measure 4" from the end of the springs. Make a mark on the rod. Stretch the spring to the mark and tighten both bolts on the spring hub. The spring must be stretched before winding up the spring. Both springs must be stretched before step 12.



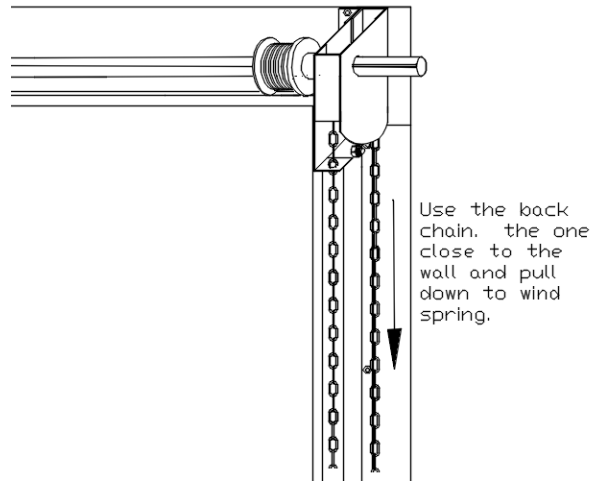
NOTE: SPRINGS MUST BE STRETCHED BEFORE WINDING

TIGHTEN SPRINGS AND SET ROD

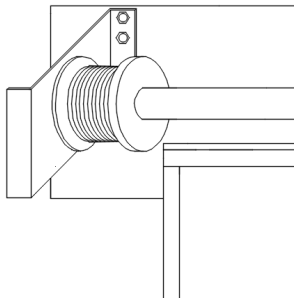
STEP 12

Holding the back chain begin pulling down to rotate the shaft clockwise. Wind the spring until the required tension on the spring. As the spring tightens the chain tension will increase. Below is the table of full rotations on the shaft to set tension for each door size.

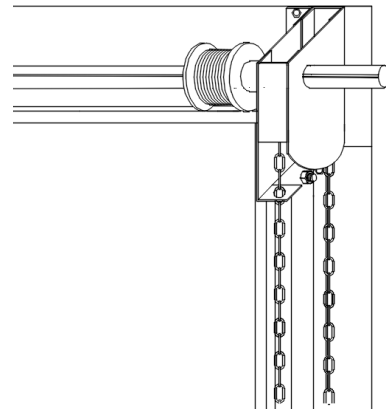
Door Size	Minimum	Maximum
12 x 10	9	10
12 x 9	9	10
14 x 10	12	13
14 x 9	12	13



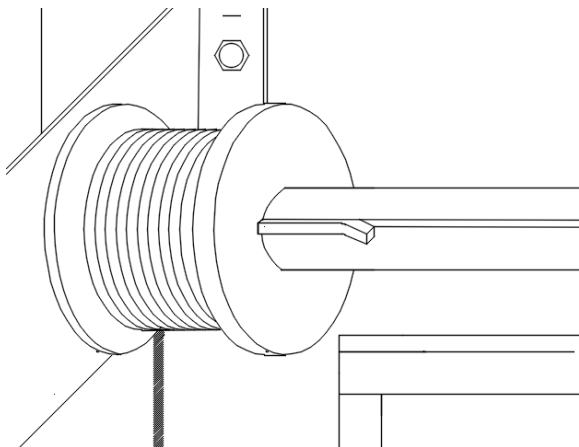
Check Drum Placement



While holding Spring Tension with the chain make sure the left drum is pushed up against the rod support bushing. The right drum is pushed against the spacer bushing.



Install key stock

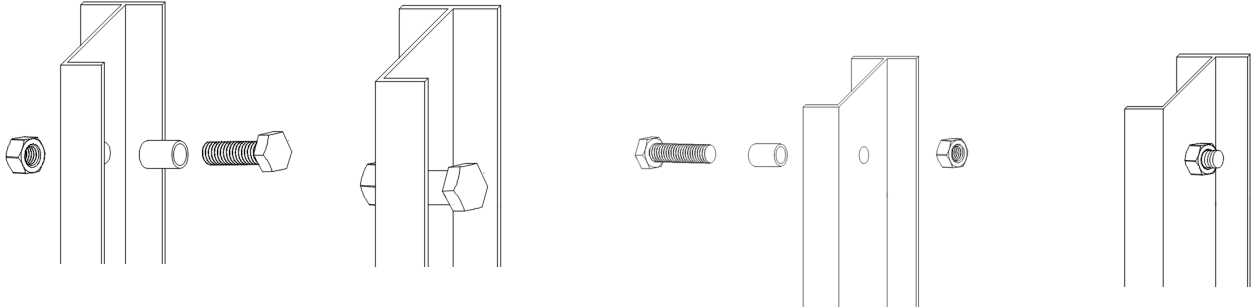


Keep tension on the chain and align the rod keyway with the drum. Slide the keystock into both the left and right drums. Once installed use 3/8" wrench and tighten both screws on the drum to secure drum to rod.

INSTALL SIDE RAILS AND CHAIN KEEPER

STEP 13

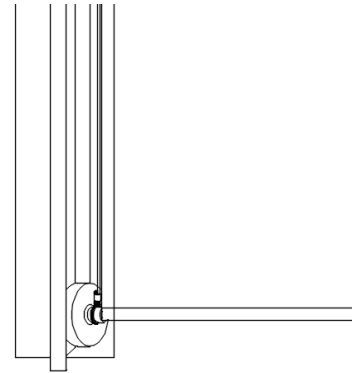
Add stop to left and right side rail. Install bushing and bolt on inside of rail and tighten nut on bolt. This creates a stop for the roller in the open position .



STEP 14

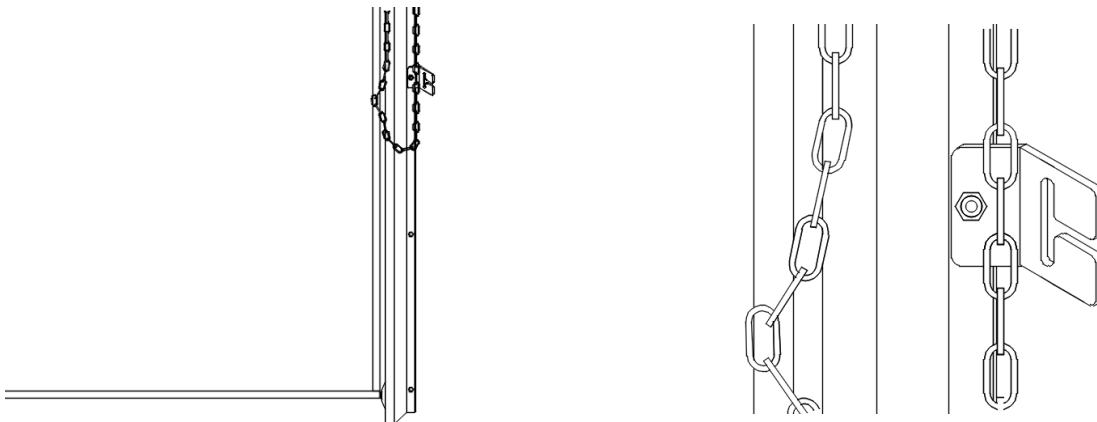
Install side rail on the side of the door. The rail should fit over the roller and next to the wall. Make sure that there is a 1/4" space between the roller and the side of the rail. Failure to add this space will cause the roller to bind against the rail. The roller will ride up and down the side rail freely. Verify that while the door is opening there is a gap between the roller and the rail.

Use the 5/16" x 1 1/2" Lags on side rails.



STEP 15

Install chain latch keeper. Install on the chain drive side. Against the side rails. Use the 3rd hole from the bottom.



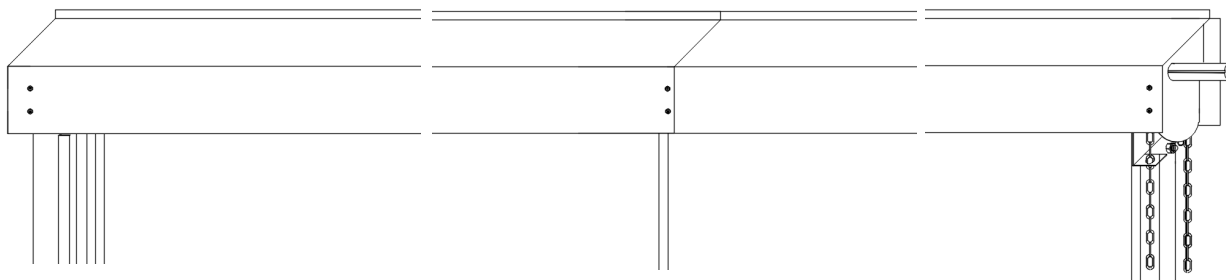
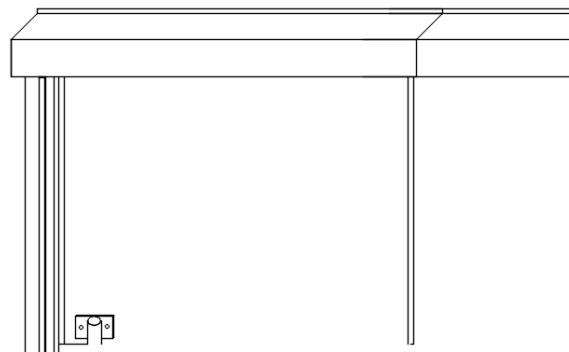
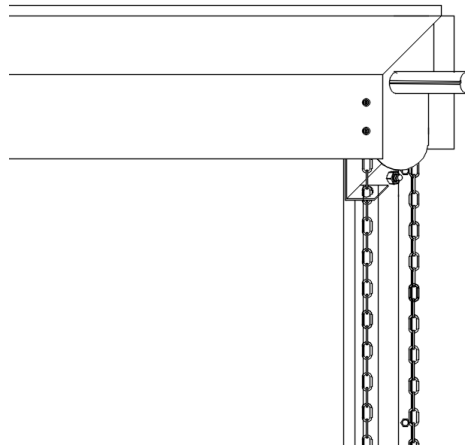
INSTALL TOP COVER

STEP 16

Install drive side top cover. The drive side cover has a notch on the inside lip to cover over the chain drive.

Install the right side top cover. It should overlap the rod support bracket and nest over the right side cover.

Use the six self tapping screws to install the top cover to the front of of the three brackets.



Install self tapping screws on front of cover.

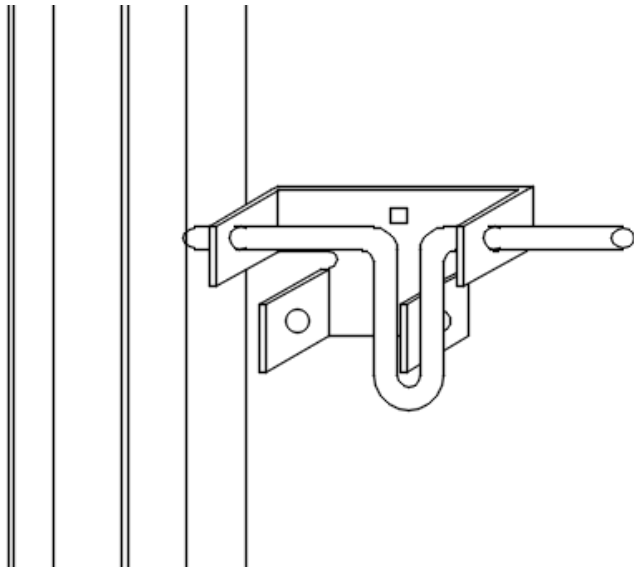
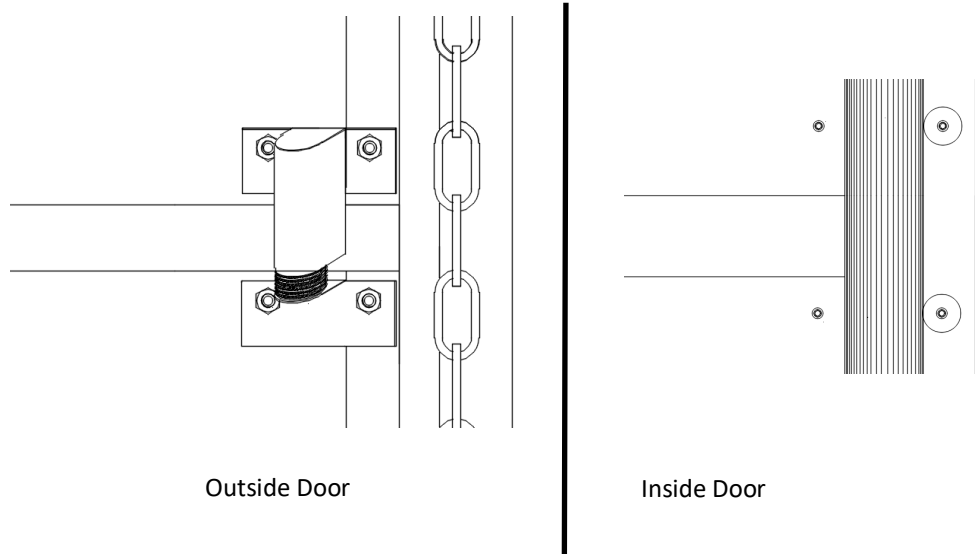
INSTALL KICKER AND LATCH

STEP 17

Use the 1/4" x 2" allen head screws. Install the from the inside out. The screws that go thru the seal need to have the 3/4" nylon washer on the screw as shown. Use a drill to poke thru the door from front to back to punch a hole in the seal.

With all 4 screw thru the door use the 5/32" allen wrench to hold the screw. Use the 7/16 socket to tighten the bolts.

DO NOT OVERTIGHTEN



STEP 18

Use the 1/4" x 1 1/2" carriage bolt to install the latch. Install the bolts thru the latch and into the door. The Sholder of the carriage bolt should line up with the square hole in the latch. Use the locking nuts on the inside of the door to tighten.

BI-FOLD DOOR PARTS

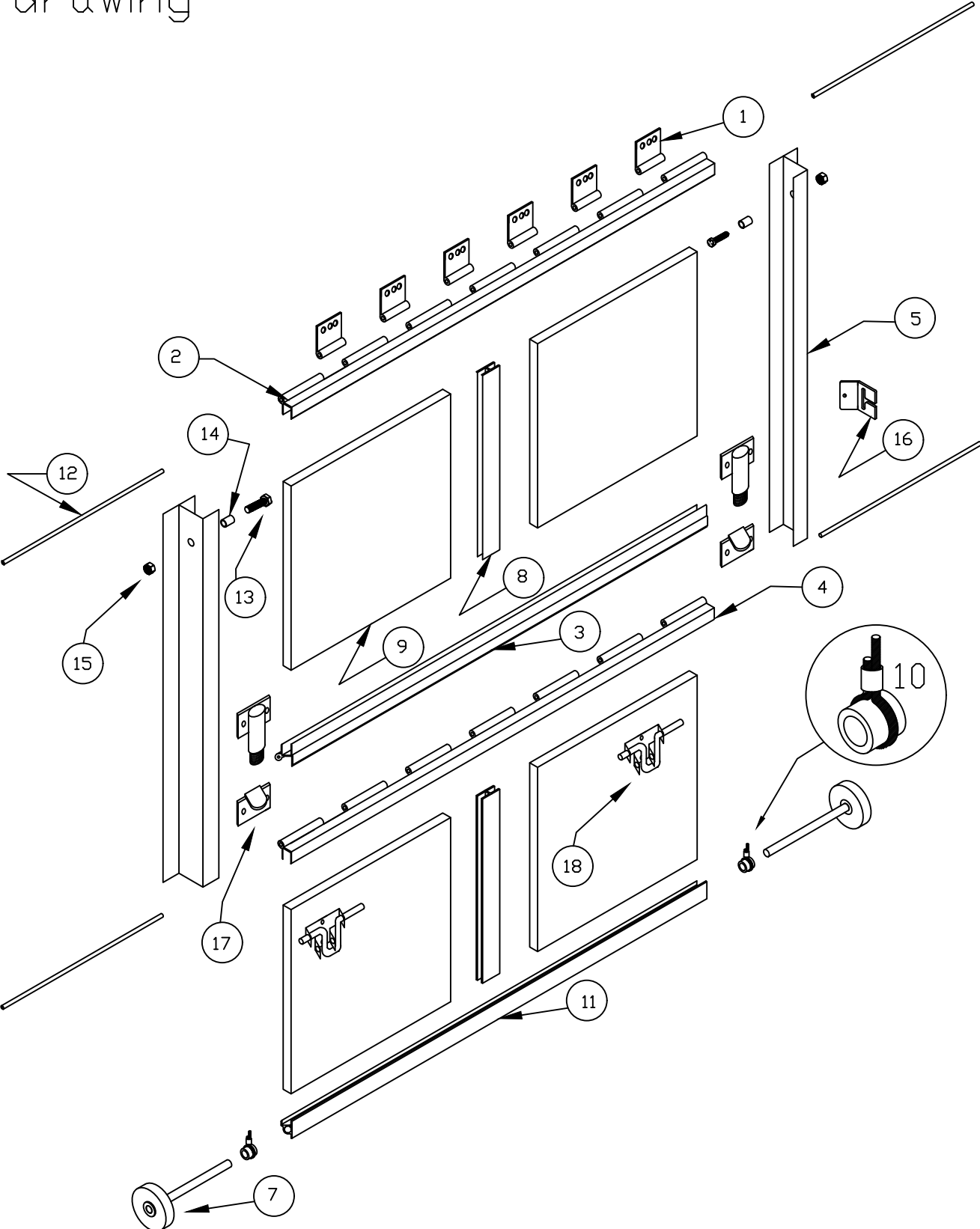
Door Assembly Parts

Item Number	Description	Qty	Part #
1	Hinge Tabs	6	
2	Upper Hinge Extrusion (specify Length)	1	
3	Upper center Hinge Extrusion (Specify Length)	1	
4	Lower Center Hinge Extrusion (Specify Length)	1	
5	Side Rails (Specify Length)	2	
6	Bottom Extrusion Seal		
7	Door Roller and Axles	2	
8	Meeting Rail (Specify Length)	2	
9	Door Panel (A,B,C,D) specify panel and size	4	
10	Cables (Specify Door Height)	2	
11	Bottom Extrusion	1	
12	Stainless Steel Hinge Rods	4	
13	Roller Stop Bolt	2	
14	Roller Stop Bushing	2	
15	Roller Stop Bolt	2	
16	Chain Latch Keeper	1	
17	Door Kicker	2	
18	Door Latch	2	

Drive and Cover Assembly Parts

Item Number	Description	Qty	Part #
1	Top Cover Off Side	1	
2	Top Cover Drive Side	1	
3	Red Spring (Left)	1	
4	Black Spring (Right)	1	
5	Spring Nuts	2	
6	Spring Bolts	2	
7	Center Rod Support	1	
8	Center Rod Bushing	1	
9	End Rod Support	1	
10	End Rod Support Bushing	1	
11	Rod Bushing	1	
12	Red Cable Drum (Left)	1	
13	Black Cable Drum (Right)	1	
14	Chain Drive	1	
15	Rod (Specify shaft length 12',14' or 16')	1	

Door Assembly exploded drawing



Drive and cover
assembly exploded
drawing

