

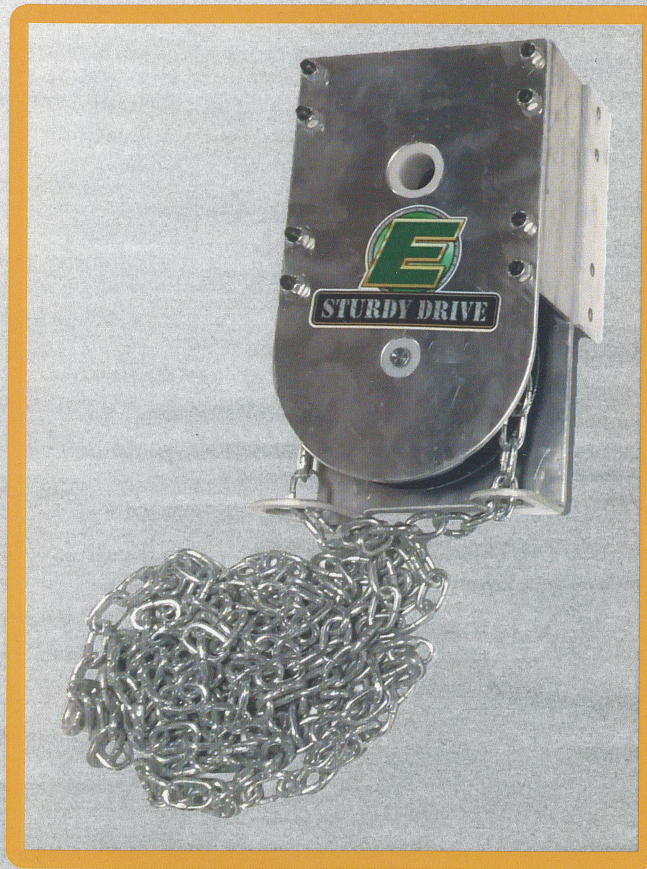
# EAGAN

MANUFACTURING CO., LLC.

P.O. Box 620 | 602 Eagan Road | Black Rock, Arkansas 72415  
P 870.878.6805 | F 870.878.6280 | www.eaganmfg.com

## STURDY DRIVE<sup>®</sup>

*Retro Kit*



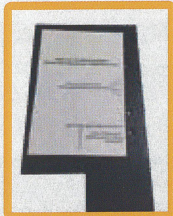
Update your Eagan Sturdy Seal<sup>®</sup> Folding Door with the **STURDY DRIVE<sup>®</sup>** *Retro Kit*

- Quick install
- More efficient operation
- Revolutionary door kicker system starts the opening process as soon as the door is unlatched
- Allows for easy access for operation in instances of close proximity to equipment (e.g., fans, cool cells, entrance doors, etc.)



# STURDY DRIVE<sup>®</sup>

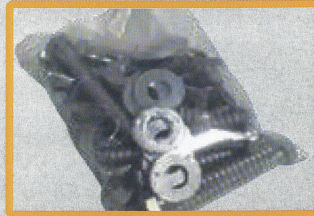
## *Retro Kit* PARTS



TEMPLATE



DRUM KEYS, SHAFT COLLARS,  
SPRING BOLTS & NUTS



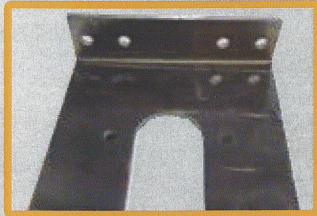
3" x 0.375" LAG SCREWS  
w/washers and 9/32 drill bit



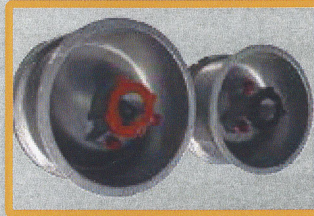
TOP COVER SELF-DRILLING  
SCREWS



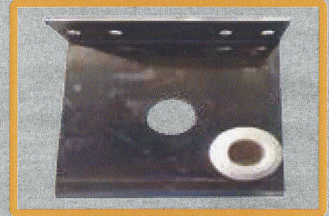
DOOR KICKERS  
w/ bolts & nuts



CENTER ROD SUPPORT  
Bracket



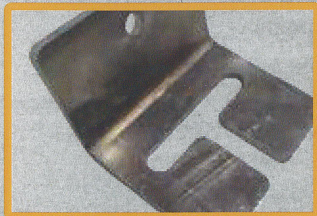
LEFT CABLE DRUM (RED)  
RIGHT CABLE DRUM (BLACK)



END ROD SUPPORT  
Bracket & Bushing



CHAIN DRIVE



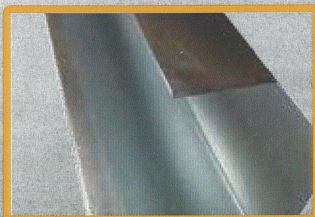
CHAIN KEEPER



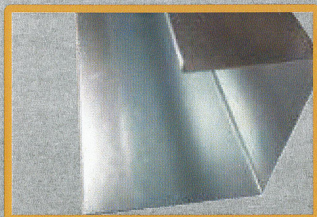
SHAFT AND SPRINGS  
Red - Left  
Black - Right



CABLE



DRIVE SIDE TOP COVER



OFF SIDE TOP COVER